

Bulletin 13 – 07/06/2011



The following Championship regulation changes and amendments shall be made for the 2011 Ginetta GT Supercup with immediate effect:

G50 Regulations

- 6.14.2 The maximum number of tyres available to each car for use during each Championship meeting (where two or three rounds are timetabled over a single weekend) will be limited to 4 new tyres and 4 used tyres. The 'used' spare tyres must be those used (and thus will have been nominated) on a previous race weekend.

A maximum of 8 tyres must be presented at scrutineering (4 on the car, 4 additional tyres) for registration and recording by the Eligibility Scrutineer. Four of the eight tyres must be those used at a previous meeting in the 2011 championship and as such will be recorded within the car's log book from a previous meeting. The only exception to this is the first event at Brands Hatch. At the Brands Hatch meeting only, the maximum number of tyres available to each car is 8 tyres (new or used).

Bar-coding and / or permanent paint marking will be used to control tyre use. It is the competitor's responsibility to ensure that all tyres are marked before use and logged by the series co-ordinator and/or series scrutineer.

- 6.15.1 Each driver/entrant must record on the Tyre Nomination Form, the serial numbers of the 8 slick tyres which he/she intends to use in the event.

The Form must be signed by the driver/entrant and submitted to the Technical Support Vehicle before the first timed practice. The Series Eligibility/Safety Scrutineer or his appointed representative will sign for receipt and return the back copy. The onus is on the driver/entrant to ensure that the completed form is deposited with the Technical Support Vehicle and appointed representative before the first official timed practice. Failure to do so will be the subject of a report to the Clerk of the Course / Stewards.

- 6.15.13 At the Series Safety/Eligibility Scrutineers discretion, the 8 tyres for the event, listed on the Tyre Nomination Form may be retained at the end of Official Practice and Race(s) until a minimum of 30 minutes prior to next time that the tyres are required to be used.

G55 Regulations

- 7.14.2 The maximum number of tyres available to each car for use during each Championship meeting (where two or three rounds are timetabled over a single weekend) will be limited to 4 new tyres and 4 used tyres. The 'used' spare tyres must be those used (and thus will have been nominated) on a previous race weekend.

A maximum of 8 tyres must be presented at scrutineering (4 on the car, 4 additional tyres) for registration and recording by the Eligibility Scrutineer. Four of the eight tyres must be those used at a previous meeting in the 2011 championship and as such will be recorded within the car's log book from a previous meeting. The only exception to this is the first event at Brands Hatch. At the Brands Hatch meeting only (April 2/3), the maximum number of tyres available to each car is 8 tyres (new or used).

Bar-coding and / or permanent paint marking will be used to control tyre use. It is the competitor's responsibility to ensure that all tyres are marked before use and logged by the series co-ordinator and/or series scrutineer.

- 7.15.1 Each driver/entrant must record on the Tyre Nomination Form, the serial numbers of the 8 slick tyres which he/she intends to use in the event.

The Form must be signed by the driver/entrant and submitted to the Technical Support Vehicle before the first timed practice. The Series Eligibility/Safety Scrutineer or his appointed representative will sign for receipt and return the back copy. The onus is on the driver/entrant to ensure that the completed form is deposited with the Technical Support Vehicle and appointed representative before the first official timed practice. Failure to do so will be the subject of a report to the Clerk of the Course / Stewards

- 7.15.13 At the Series Safety/Eligibility Scrutineers discretion, the 8 tyres for the event, listed on the Tyre Nomination Form may be retained at the end of Official Practice and Race(s) until a minimum of 30 minutes prior to next time that the tyres are required to be used.

Bulletin 12 – 07/06/2011



Ginetta GT Supercup Drivers / Teams,

Please see the following details relating to the fifth round of the Championship at Croft on the 17/18/19 June.

Ginetta Staff

The following core Ginetta staff will be present at Croft:

Championship Co-ordinators	- Stewart Linn (Mobile 07590 778358)
	- Alex Suggitt
Stores	- Phil Franklin
GT Supercup Technical Support	- Lee Smith / Simon Finnis
Ginetta Junior Technical Support	- Lee Smith / Simon Finnis

Ginetta Spares Truck

The Ginetta Spares truck will be present at Croft from Friday (17th June) from 8.30am.

Ginetta Stores will be open strictly at the following times:

Friday 17 th	08.30 – 18.30
Saturday 18 th	08.30 – 19.00
Sunday 19 th	09.30 – 18.00

Testing

Ginetta GT Supercup testing will take place on Friday 3rd June, signing on for the Friday test will take place in the Ginetta Race centre from 10.30 – 10.45am.

Weekend Sign on and Drivers briefing

Ginetta GT Supercup signing on for the race weekend will take place in the Ginetta race centre at 9.45 – 10.00am

Drivers briefing will take place at 10.00am in the Ginetta race centre.

Security

There will be 24-hour security in place at Croft (from the morning of Thursday, June 16, until the morning of Monday, June 20) but the circuit has asked all teams and competitors to be extra vigilant, especially those in the Support Race Paddock (Paddock C), overnight. Please ensure that anything

you have outside of your transporters/awnings during the day is either locked to something or locked away at night.

Race Transporter Access into Circuit

Access for all transporters and paddock vehicles (including Support Races) is via Gate 3 which will be signposted. Directions: If you come towards the circuit over the railway bridge, Gate 3 is the second entrance on the right (not the first!). If you come via the village of Scorton, Gate 3 is the first entrance on the left (not the second). This entrance leads straight into Paddock B, near the Medical Centre, where all Transporters will be held until called for by the paddock crew.

Competitors Car Park Pass access into Circuit

Access for all vehicles with Competitors Car Park Passes on Thursday, June 16, and Friday, June 17, is via the Croft main entrance (not Gate 3) and **all vehicles from the Support Race paddock** with Competitors Car Park passes will be parked in the car park on the right before the gate into the paddocks (unless the ground is wet). All BTCC vehicles with Competitors Car Park passes should park behind the BTCC motorhome area.

On Saturday, June 18, and Sunday, June 19, **ALL** vehicles with passes should enter via Gate 3 (see 1.3 above). See 3.7 below for location of Competitors Car Parks.

Transporter / Support Vehicle Departure on Sunday, June 19

All Transporters or large Support Vehicles will not be permitted to leave the circuit until the END of the third BTCC race and they must use the Gate 3 exit. This is because the route to Gate 3 takes transporters past the spectator banking at the first and second corners and can block viewing. Any vans / cars that are in the paddock can leave at the usual point in the Meeting (which is *after* the start of the third BTCC race) via the main entrance / exit as they won't obstruct spectators' viewing.

Water Supply

ALL teams, Race Centres etc. (BTCC and Support Race) are advised to use the Croft water supply sparingly. When hoses are not in use, please turn the water tap off at the supply point (not just turn the hose off). Croft has a limited water supply which can soon be exhausted by leaking hose joints etc.

Live Television

PLEASE NOTE: Due to the demands of the live ITV broadcast at this Championship Meeting, the event timetable on Sunday is flexible to allow for any unforeseen circumstances on the day. Therefore start times, particularly for the BTCC races, may change at short notice and teams/competitors will be notified by event officials if/when that happens.

Support Race Pit Lane Entry / Exit

Entry and exit for Support Race pit lane equipment for the race weekend, including the Friday test day, is via the gap into the pit lane next to Garage 1.

Refuse Collection on Friday, June 17

Teams / Race Centres are advised to leave rubbish (in bags) and empty boxes at the front of their awnings, or Transporters, for collection on the evening of Friday, June 17, and not fill the skips. This will make it easier for the refuse collection and keep the Croft skips empty in readiness for the weekend's waste!

PLEASE NOTE - The following items must not be put into the skips but into the "Small Recycling" areas which are next to the Ladies Toilets in the BTCC Paddock and next to the Waste Oil Container in the Support Race Paddock: Oily Rags (including oil contaminated soak-up granules), Aerosols, Oil Filters, Empty Oil Containers, Batteries, Empty Containers for Vehicle Shampoo & Traffic Film Remover. If any of the above items are deposited in the skips the circuit could be fined up to £1000.

Paddock vehicles

A reminder: Quad bikes, or any vehicles that are used by teams to transport equipment, should only be used for transporting equipment or towing something. They should not be used for personal transport round the paddocks. The circuit has warned that any quad bikes or buggies found in spectator areas in particular will be confiscated.

Teams are also reminded not to leave keys in golf buggies!

Timetable

Thursday, June 16

09.30 – 11.30 Renault Parking Up
11.30 – 13.00 Ginetta Parking Up

Friday, June 17

07.30 – 08.30 Support Race Latecomers Parking Up
09.00 – 24.00 Power available from 360 CES Generators (pre-booking essential)
09.30 – 10.15 F Renault Testing
10.20 – 10.50 Ginetta Junior Testing
10.55 – 11.40 Clio Testing
11.45 – 12.30 Ginetta GT Testing
12.30 – 13.30 Lunch Break
13.30 – 14.15 F Renault Testing
14.20 – 14.50 Ginetta Junior Testing
14.55 – 15.40 Clio Testing
15.45 – 16.30 Ginetta G50 Testing
After 17.30 No racing engines to be run

Saturday June 18

00.00 – 24.00 Power available from 360 CES Generators (pre-booking essential)
Before 07.30 Total ban on the use of Paddock Bikes etc.
Before 09.00 No racing engines to be run
12.40 – 13.40 Lunch Break
After 18.30 No racing engines to be run
After 19.00 Total ban on the use of Paddock Bikes etc.

Sunday June 19

00.00 – 18.00	Power available from 360 CES Generators (pre-booking essential)
Before 10.00	Total ban on the use of Paddock Bikes etc.
10.20 – 11.00	BTCC: Pit Lane Walkabout / Autograph Session
Before 11.45	No racing engines to be run
After 18.30	No racing engines to be run
After 19.00	Total ban on the use of Paddock Bikes etc.

Important Notes for All Competitors:

The Fire Lane at the rear of the Pit Garages must be kept totally clear at all times.

- 3.6 Please note that it is not permitted to drive any pins or stakes into the Paddock surface. A fine of £100 may be levied by the circuit for each and every breach of this rule. A limited supply of concrete blocks will be available from the circuit for holding down awnings if required.
- 3.7 Parking for all Support Race private cars, vans, crew buses etc. is on the grass that runs the length of Paddock C (the Support Race Paddock) – for avoidance of doubt, behind the transporters and awnings. If full, cars should be parked in the main car park.
- 3.8 You are advised that most of the water supply at Croft is unsuitable for drinking. Either bring your own supply or boil the water before using. One tap for drinking water is situated in Paddock B (the paddock with the Medical Centre) near the Security Office and is clearly marked; the second tap for drinking water is on the outside of the Gents toilet in the BTCC paddock.
- 3.9 We advise you that the empty Carless fuel cans should be left tidily near the Hangers in Paddock C – teams / co-ordinators to check with MSO as to the exact location. **Please ensure that all waste oil is placed in the waste oil facilities and not put into empty Carless fuel cans (along with any other substances) as these incur high costs to recycle and the costs will be passed on to all teams in your Championship.**
- 3.10 The maximum number of starters permitted by the Track Licence at Croft Circuit is 36 for saloons (32 for single-seaters).
- 3.11 A Pass Out system will be operational on Sunday, June 19. Anyone with a BTCC/TOCA pass of any description who needs to leave the circuit must make sure they see a security guard at the gate to be issued with the Pass Out. Anyone attempting to re-enter the circuit with a marked pass but without a Pass Out will be refused admission. Please ensure all team members and guests with permanent passes understand this.

Full Timetable:

A full revised Croft timetable is on the page below –

Bulletin 11 – 06/06/2011 Oulton Park

**Results**

Please see the following link for the latest championship results:

http://ginetta.com/championship_supercup

The final results from all race weekends, including further data for analysis can be found on the TSL website: www.tsl-timing.com

The current Ginetta GT SuperCup G55 Cup drivers championship table is as follows:

	Driver	Total
1	Tom Sharp	314
2	Carl Breeze	289
3	Adam Morgan	257
4	George Murrells	230
5	Colin White	182
6	Nathan Freke	167
7	Joachim Ritter	124
8	Alistair James	118
9	Freddie Hetherington	92
10	Mark Steward	71
11	Stefan Hodgetts	61
12	Clint Bardwell	54
13	Jordan Skinner	32

The current Ginetta GT SuperCup G50 Cup drivers championship is as follows:

	Driver	Total
1	Tom Ingram	328
2	Jody Fannin	247
3	Jake Hill	234
4	Aaron Williamson	205
5	Rob Gaffney	186
6	Louise Richardson	136
7	Andrew Richardson	112
8	Connaire Finn	86
9	Martin Thomas	36
10	Lee Pattison	22
11	Paul McClughan	14

Teams Championship

The current Michelin Ginetta GT SuperCup team's championship table is as follows:

	Team	Total
1	Optimum Motorsport	464
2	Plans Motorsport	446
3	TCR	421
4	Century Motorsport	357
5	IDL	314
6	Ciceley Racing	257

Judicial Information

No penalties applied (Note: all incidents investigated were deemed racing incidents or there was insufficient evidence to warrant further action).

Scrutineering

Pre Event	
Drivers Racewear	All Drivers

Qualifying	
Car and Driver weight	All cars
Performance Data Downloaded and checked	All cars except 11 and 78

Round 10	
Fuel Sample	Cars 3, 73, 80 and 94
Top and bottom left hand front wishbones, bushes, and spacers checked	Cars 3, 6, 73, 31, 80 and 94

Round 11	
Fuel Sample	Cars 6, 33, 27, 31
Front and rear brake pads and camber shims checked	Cars 3, 6, 73, 31, 80 and 94

Issued by-

Max Gregory (06 June 2011)

Championship Co-ordinator

For and on behalf of Ginetta Cars

Max Gregory

T-0113 3854162

M-07792 927552

F-0113 3854141

[E- max.gregory@ginetta.com](mailto:max.gregory@ginetta.com)

Bulletin 10 – 17/05/2011



Ginetta GT Supercup Drivers / Teams,

Please see the following details relating to the fourth round of the Championship at Oulton Park on the 3/4/5 June.

Ginetta Staff

The following core Ginetta staff will be present at Oulton Park:

Championship Co-ordinators	- Max Gregory (Mobile 07792 927552)
	- Alex Suggitt
Stores	- Phil Franklin
GT Supercup Technical Support	- Marcos Lameirao
Ginetta Junior Technical Support	- Ashley Gallagher

Ginetta Spares Truck

The Ginetta Spares truck will be present at Oulton Park from Friday (3rd June) from 8.00am.

Testing

Ginetta GT Supercup testing will take place on Friday 3rd June, signing on for the Friday test will take place in the Ginetta Race centre from 09.30 – 09.45am.

Weekend Sign on and Drivers briefing

Ginetta GT Supercup signing on for the race weekend will take place in the Ginetta race centre at 9.00 – 9.15am

Drivers briefing will take place at 9.30am in the Ginetta race centre.

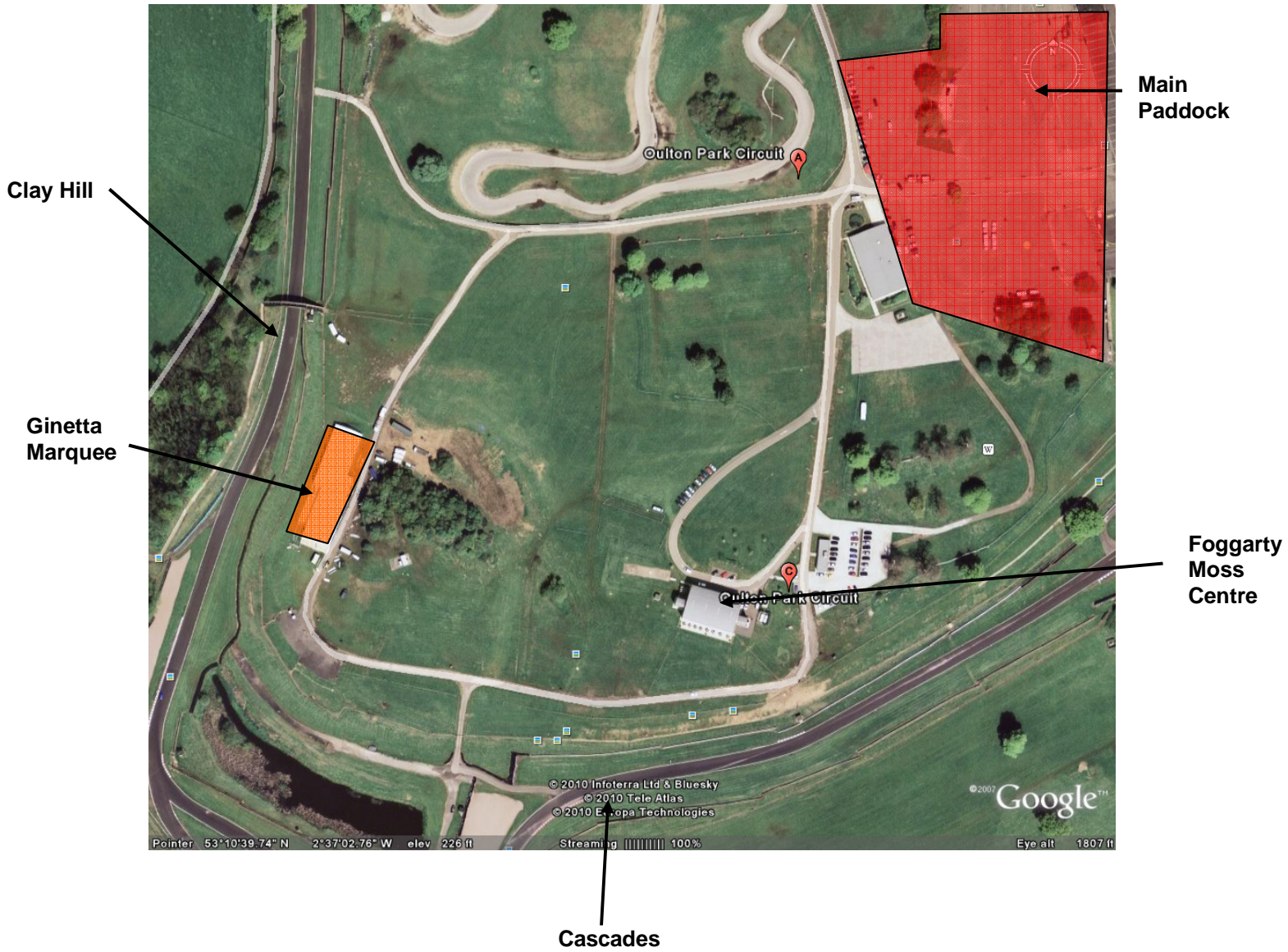
Saturday Night Barbeque

Ginetta will once again be hosting a barbeque on the Saturday night in a marquee (please see below map for location of marquee). Each driver will be allocated **four tickets** to the barbeque, free food, drink and music will be available. The barbeque will start at 6.30pm and we hope to see you all there.

Race Day Hospitality

Contrary to a normal race weekend, race day hospitality will take place in the marquee rather than the Ginetta race centre. Food will be served as normal from 12.00 – 14.00 and with the same allocation of four hospitality tickets per driver.

Marquee Location



Car Parking during Parking Up Days

To help ease paddock congestion on Thursday and Friday Parking Up days, as detailed in the timetable below (1.9), ALL vehicles that do not have Paddock passes must park in the Competitors Car Park (in the field immediately on the left once past the ticket check booths) as directed by circuit security.

Any abuse shown towards the vehicle pass system / circuit security will result in passes being withdrawn. Any vehicles found in unauthorised areas will be removed without warning.

Please note: No teams will be permitted entry into the circuit before 18.00hrs on Wednesday, June 1, due to a private hire of the circuit so there is no point in turning up early.

NEW motorhome area

The motorhome area for **ALL** private motorhomes is in the field immediately on the left once over the bridge at the circuit entrance. It is no longer in the area next to Chequers Diner. See 3.9 below for full details.

Live Television

PLEASE NOTE: Due to the demands of the live ITV broadcast at this Championship Meeting, the event timetable on Sunday is flexible to allow for any unforeseen circumstances on the day. Therefore start times, particularly for the BTCC races, may change at short notice and teams/competitors will be notified by event officials if/when that happens.

Support Race Pit Lane Entry / Exit

Entry for pit lane equipment for both the test day and the race weekend will be via the gate next to the Race Control building. Exit for pit lane equipment on both the test day and the race weekend will be through new exit lane next to Garage 28 **not** through Garage 28. Re-fuelling on the test day if necessary can take place in the Assembly Area.

Circuit Entry on Saturday, June 4

Circuit security will mark passes on Saturday, June 4, with a marker pen (over the No.4 silver strip on the back of the passes), so please have your passes available when entering the circuit.

Ticket Collection Point

A reminder: The circuit has a Holding Area for anyone collecting tickets/passes from people already in the circuit on Sunday, June 5. This is on the left hand side once over the bridge at the main entrance. Teams should arrange to meet sponsors/guests at this location to hand over tickets/passes for the day.

Timetable

Thursday, June 2

09.00 – 11.00	Ginetta Parking Up
11.00 – 13.00	Renault Parking Up
13.00 – 15.00	Porsche Parking Up

Friday, June 3

07.30 – 08.30	Support Race Latecomers Parking Up
09.00 – 09.30	Ginetta Junior Testing
09.35 – 10.20	F Renault Testing
10.25 – 11.10	Ginetta GT Testing
11.15 – 12.00	Clio Testing
12.05 – 12.50	Porsche Testing
12.50 – 13.10	Lunch Break
13.10 – 13.40	Ginetta Junior Testing
13.45 – 14.30	F Renault Testing
14.35 – 15.20	Ginetta GT Testing
15.25 – 16.10	Clio Testing
16.15 – 17.00	Porsche Testing
After 17.30	No Racing Engines

Saturday, June 4

00.00 – 24.00	Power available from 360 CES Generators (pre-booking essential)
Before 07.00	Total ban on the use of paddock vehicles etc.
Before 09.00	No racing engines to be run
13.25 – 14.20	Lunch Break
After 18.30	No racing engines to be run
After 19.00	Total ban on the use of paddock vehicles etc.

Sunday, June 5

00.00 – 18.00	Power available from 360 CES Generators (pre-booking essential)
Before 10.00	Total ban on the use of paddock vehicles etc.
10.35 – 11.10	BTCC: Pit Lane Walkabout / Autograph Session
11.30	BTCC: Drivers Parade
Before 12.00	No racing engines to be run
After 18.30	No racing engines to be run

Important Notes for All Competitors

Due to testing, BTCC teams will only have access to the Pit Lane during the lunch break (12.50 - 13.10) and after 17.00hrs on Friday.

The obviously-marked Fire Lane to the rear of the pit garages must be kept clear at all times.

Please note it is not permitted to drive any pins or stakes into the Paddock surface. The circuit may levy a fine of £100 plus reinstatement costs for each and every breach of this rule.

The Competitors Car Park is in the two fields immediately on the left once past the ticket check booths.

Parking for all motorhomes (including all Support Race motorhomes) not indicated on the paddock plan is in the motorhome area which is immediately on the left once over the bridge after the circuit entrance. Water is available in this area but motorhome users must not leave their water hoses permanently plumbed in to the water supply – it is for filling water carriers, tanks etc. only.

Empty Carless fuel cans should be left tidily the circuit fuel pumps on departure. **Please ensure that all waste oil is placed in the waste oil facilities and not put into empty Carless fuel cans (along with any other substances) as these incur high costs to recycle and the costs will be passed on to all teams in your Championship.** Teams are reminded not to leave old tyres in the paddock as well.

All refuse bins will be emptied on Friday and Saturday at 18.30 and early Sunday morning.

The circuit / paddock must be clear as soon as possible on Monday.

The maximum number of starters permitted by the MSA Track Licence at Oulton Park (Island Circuit) is 32 (30 for single seaters).

There will be 24-hour security in place from Thursday 07.00 to Monday 07.00. However, please ensure that all your property is kept safe at all times – if possible, guarded by a team member when your cars are on track – and is not easily removable.

A reminder: No-one is permitted to drive paddock buggies/quads etc. outside of the Oulton Park paddock unless they have an Oulton Park pass for that purpose.

A Pass Out system will be operational on Sunday, June 5. Anyone with a TOCA pass of any description who needs to leave the circuit must see a security guard at the gate to be issued with the Pass Out. Anyone attempting to re-enter the circuit with a marked pass but without a Pass Out (and vice versa) will be refused admission. Please ensure all team members and guests with permanent passes understand this.

OULTON PARK ISLAND CIRCUIT
Saturday / Sunday June 4 – 5
2011 TOCA Timetable : Version 5 (09.05.11)

Saturday, June 4

Time	Activity	Championship	Signing-On	Scrutineering
09.05 – 09.20	Free Practice	Ginetta Junior Championship	07.15 – 07.30	07.00 – 08.00
09.30 – 10.10	Free Practice	Dunlop MSA British Touring Car Championship	08.30 – 09.00	07.30 – 08.30
10.25 – 10.45	Qualifying	Formula Renault 2.0 UK Championship	08.30 – 08.45	07.15 – 09.15
10.55 – 11.15	Qualifying	Michelin Ginetta GT Supercup	09.00 – 09.15	09.00 – 10.00
11.25 – 11.55	Qualifying	AirAsia Renault Clio Cup UK	09.30 – 10.00	09.30 – 10.30
12.05 – 12.35	Qualifying	Porsche Carrera Cup Great Britain	09.30 – 09.45	10.00 – 11.00
12.45 – 13.25	Free Practice	Dunlop MSA British Touring Car Championship	---	---
13.25 – 14.20	Lunch Break			
14.20 – 14.35	Qualifying	Ginetta Junior Championship	---	---
14.45 – 15.05	Qualifying	Formula Renault 2.0 UK Championship	---	---
15.15 – 15.45	Qualifying	Dunlop MSA British Touring Car Championship	---	---
15.55	Race	Michelin Ginetta GT Supercup		15
16.30	Race	AirAsia Renault Clio Cup UK		12
17.10	Race	Porsche Carrera Cup Great Britain		18
17.50	Race	Ginetta Junior Championship		10

Sunday, June 5

Time	Activity	Laps
10.35 – 11.10	Pit Lane Walkabout / Autograph Session	
11.30	BTCC Drivers' Parade	
12.05	BTCC Pit Lane Opens	
12.15	Dunlop MSA British Touring Car Championship	15
13.00	Formula Renault 2.0 UK Championship	15
13.40	Michelin Ginetta GT Supercup	15
14.20	BTCC Pit Lane Opens	
14.30	Dunlop MSA British Touring Car Championship	15
15.10	AirAsia Renault Clio Cup UK	12
15.50	Porsche Carrera Cup Great Britain	18
16.30	Ginetta Junior Championship	8
17.00	BTCC Pit Lane Opens	
17.10	Dunlop MSA British Touring Car Championship	15
17.45	Formula Renault 2.0 UK Championship	15

The programme may be brought forward or the programme order may be amended and competitors should listen carefully to the instructions given to them by their Championship Co-ordinator and/or Paddock announcements. It may not be possible to accommodate competitors arriving after the Assembly Area has been cleared.

The following Championship regulation changes and amendments shall be made for the 2011 Ginetta GT Supercup with immediate effect:

G50

Championship regulation 6.14.2 to be altered to read:

6.14.2 The maximum number of tyres available to each car for use during each Championship meeting (where two or three rounds are timetabled over a single weekend) will be limited to 4 new tyres and 2 used tyres. The 'used' spare tyres must be those used (and thus will have been nominated) on a previous race weekend.

A maximum of 6 tyres must be presented at scrutineering (4 on the car, 2 additional tyres) for registration and recording by the Eligibility Scrutineer. The two additional tyres must consist of 1 front tyre and 1 rear tyre. Two of the six tyres must be those used at a previous meeting in the 2011 championship and as such will be recorded within the car's log book from a previous meeting. The only exceptions to this are the first event at Brands Hatch and the third event at Thruxton. At the Brands Hatch meeting only (April 2/3), the maximum number of tyres available to each car is 6 tyres (new or used). At the Thruxton meeting only (30 April / 1 May), the maximum number of tyres to each car is 7 tyres (5 new tyres and 2 used tyres).

Bar-coding and / or permanent paint marking will be used to control tyre use. It is the competitor's responsibility to ensure that all tyres are marked before use and logged by the series co-ordinator and/or series scrutineer.

Championship regulation 6.14.9 to be altered to read:

6.14.9 Any tyres required for use in official qualifying, race(s) and official test days, may only be purchased:

- (i) from the approved supplier (Protyre Motorsport) or through Ginetta Cars.
- (ii) If, at the time of purchase the drivers Tyre Purchase Record for the car, onto which tyres are to be fitted, is presented, for inspection and allocation of tyre identification numbers.

Only in exceptional cases where, in the judgement of the Series Eligibility/Safety Scrutineer, damage to a maximum of 2(two) nominated slick tyres makes further participation in the event impossible, nominated 'used' front and/or rear tyres may be substituted. A 'used' tyre is defined as a tyre that is visibly worn and been subjected to at least one heat cycle. With the exception of the first race weekend, the 'used' spare tyres must be those used (and thus will have been nominated) on a previous race weekend. The substitution may only be authorised by the Series Eligibility/Safety Scrutineer.

Only in very exceptional cases where, in the judgement of the Series Eligibility/Safety Scrutineer, damage to nominated slick tyres makes further participation in the event impossible and all previously nominated tyres are unusable, new tyres may be purchased. The substitution may only be authorised by the Series Eligibility/Safety Scrutineer. Up to 4 new tyres may be purchased over the race weekend. Drivers will be given a 5 place grid penalty in the next race of the weekend for each tyre purchased.

G55

Championship regulation 7.14.2 to be altered to read:

7.14.2 The maximum number of tyres available to each car for use during each Championship meeting (where two or three rounds are timetabled over a single weekend) will be limited to 4 new tyres and 2 used tyres. The 'used' spare tyres must be those used (and thus will have been nominated) on a previous race weekend.

A maximum of 6 tyres must be presented at scrutineering (4 on the car, 2 additional tyres) for registration and recording by the Eligibility Scrutineer. The two additional tyres must consist of 1 front tyre and 1 rear tyre. Two of the six tyres must be those used at a previous meeting in the 2011 championship and as such will be recorded within the car's log book from a previous meeting. The only exceptions to this are the first event at Brands Hatch and the third event at Thruxton. At the Brands Hatch meeting only (April 2/3), the maximum number of tyres available to each car is 6 tyres (new or used). At the Thruxton meeting only (30 April / 1 May), the maximum number of tyres to each car is 7 tyres (5 new tyres and 2 used tyres).

Bar-coding and / or permanent paint marking will be used to control tyre use. It is the competitor's responsibility to ensure that all tyres are marked before use and logged by the series co-ordinator and/or series scrutineer.

Championship regulation 7.14.9 to be altered to read:

7.14.9 Any tyres required for use in official qualifying, race(s) and official test days, may only be purchased:

- (i) from the approved supplier (Protyre Motorsport) or through Ginetta Cars.
- (ii) If, at the time of purchase the drivers Tyre Purchase Record for the car, onto which tyres are to be fitted, is presented, for inspection and allocation of tyre identification numbers.

Only in exceptional cases where, in the judgement of the Series Eligibility/Safety Scrutineer, damage to a maximum of 2(two) nominated slick tyres makes further participation in the event impossible, nominated 'used' front and/or rear tyres may be substituted. A 'used' tyre is defined as a tyre that is visibly worn and been subjected to at least one heat cycle. With the exception of the first race weekend, the 'used' spare tyres must be those used (and thus will have been nominated) on a previous race weekend. The substitution may only be authorised by the Series Eligibility/Safety Scrutineer.

Only in very exceptional cases where, in the judgement of the Series Eligibility/Safety Scrutineer, damage to nominated slick tyres makes further participation in the event impossible, and all previously nominated tyres are unusable, new tyres may be purchased. The substitution may only be authorised by the Series Eligibility/Safety Scrutineer. Up to 4 new tyres may be purchased over the race weekend. Drivers will be given a 5 place grid penalty in the next race of the weekend for each tyre purchased.

I have read and understood Bulletin 9a of the 2011 Michelin Ginetta GT Supercup

Name

Signed

Bulletin 9 – 03/05/2011 Thruxton

**Results**

Please see the following link for the latest championship results:

http://ginetta.com/championship_supercup

The final results from all race weekends, including further data for analysis can be found on the TSL website: www.tsl-timing.com

The current Ginetta GT SuperCup G55 Cup drivers championship table is as follows:

	Driver	Total
1	Tom Sharp	280
2	Carl Breeze	232
3	Adam Morgan	213
4	George Murrells	198
5	Colin White	162
6	Joachim Ritter	110
7	Nathan Freke	100
8	Alistair James	90
9	Freddie Hetherington	72
10	Mark Steward	71
11	Clint Bardwell	54
12	Jordan Skinner	32

The current Ginetta GT SuperCup G50 Cup drivers championship is as follows:

	Driver	Total
1	Tom Ingram	265
2	Jody Fannin	205
3	Rob Gaffney	186
4	Jake Hill	173
5	Aaron Williamson	144
6	Louise Richardson	136
7	Andrew Richardson	112
8	Connaire Finn	68
9	Martin Thomas	36
10	Paul McClughan	14

Teams Championship

The current Michelin Ginetta GT SuperCup team's championship table is as follows:

	Team	Total
1	Optimum Motorsport	371
2	Plans Motorsport	355
3	TCR	342
4	IDL	280
5	Century Motorsport	270
6	Richardson Racing	248

Judicial Information

No penalties applied (Note: all incidents investigated were deemed racing incidents or there was insufficient evidence to warrant further action).

Scrutineering

Pre Event	
Drivers Racewear	All Drivers

Qualifying	
Car and Driver weight	All cars (except car 75)

Round 7	
Fuel Sample	Cars 3, 33, 31, 80
Diff Ratios Checked	Cars 3, 33, 31, 80

Round 8	
Fuel Sample	Cars 71, 78, 2, 27
Front and rear brake discs and calipers	Cars 3, 33, 71, 78, 2, 27, 31, 46

Round 9	
Fuel Sample	Cars 3, 10, 33, 80
Car weight	Cars 3, 10, 33, 80

Issued by-

Max Gregory (03 May 2011)

Championship Co-ordinator

For and on behalf of Ginetta Cars

Max Gregory

T-0113 3854162

M-07792 927552

F-0113 3854141

[E- max.gregory@ginetta.com](mailto:max.gregory@ginetta.com)

Bulletin 8 – 21/04/2011



Ginetta GT Supercup Drivers / Teams,

Please see the following details relating to the second round of the Championship at Thruxton.

Ginetta Staff

The following core Ginetta staff will be present at Thruxton:

Championship Co-ordinators	- Stewart Linn (Mobile 07590 778358)
	- Alex Suggitt
Stores	- Dave Reid
GT Supercup Technical Support	- Marcos Lameirao
Ginetta Junior Technical Support	- Ashley Gallagher

Ginetta Spares Truck

The Ginetta Spares truck will be present at Thruxton from Thursday (28th April) from 17.00.

Friday Testing Sign On

Signing on for the Friday testing will take place in the Ginetta race centre from 9.30am – 10am.

Weekend Sign on and Drivers briefing

Ginetta GT Supercup signing on for the race weekend will take place in the Ginetta race centre at 8.45am.

Drivers briefing will take place at 9.15am in the Ginetta race centre.

Vehicle Pass Holder entry into circuit on Sunday, May 1:

After 08.30hrs on Sunday, May 1, the traffic system set up by the local police will be strictly enforced so all labelled traffic (e.g. those with TOCA-issued vehicle passes) must follow the "TOCA" signs/directions. Those that fail to do so will end up in the public car parks and not the Competitors Car Park or Paddock, whichever is relevant.

Paddock Space

Space is likely to be at a premium at this event so teams must be aware that any non-essential support vehicles may not be parked in the paddocks.

Paddock One-Way system:

During Friday, Saturday and Sunday, a one-way system will operate in the Support Race Paddock area which must be adhered to at all times to prevent any blockages and delays in the running of the event. Traffic will flow one-way anti-clockwise round the paddock!

Live Television:

PLEASE NOTE: Competitors are reminded that due to the demands of the live ITV broadcast at this Championship Meeting, the event timetable on Sunday is flexible to allow for any unforeseen circumstances on the day. Therefore start times, particularly for the BTCC races, may change at short notice and teams/competitors will be notified by event officials if/when that happens.

Support Race Pit Lane Entry / Exit:

Entry for Support Race pit lane equipment during the test day on Friday, April 29, is via the gate next to the Media Centre while the BTCC Paddock is being set up. Exit is via Parc Ferme.

Any re-fuelling during testing should take place in Parc Ferme. Teams are reminded to have the relevant fire extinguishers with them at all times during re-fuelling.

Entry for Support Race pit lane equipment on the Saturday and Sunday is via the final garage (the one next to Garage 26) and exit from the pit lane is via the gate next to the Media Centre.

Refuse disposal and collection:

The Circuit has asked that teams flatten any boxes before they dispose of them in bins and, if possible, for bins to be placed overnight in an easily accessible area to help speed up the refuse collection on Saturday and Sunday.

Timetable:

Thursday, April 28

From 08.00	Support Race Race Centres Parking Up
09.00 – 11.00	Ginetta Parking Up
11.00 – 13.00	Renault Parking Up
13.00 – 15.00	Porsche Parking Up

Friday, April 29

09.00 – 24.00	Power available from 360 CES Generators (pre-booking essential)
09.00 – 09.45	F Renault Testing
09.50 – 10.25	Ginetta Junior Testing
10.30 – 11.15	Ginetta GT Testing
11.20 – 12.05	Renault Clio Testing
12.10 – 12.55	Porsche Testing
13.00 – 13.40	F Renault Testing
13.45 – 14.15	Ginetta Junior Testing
14.20 – 15.00	Ginetta GT Testing
15.05 – 15.45	Renault Clio Testing
15.50 – 16.30	Porsche Testing
After 17.00	No racing engines to be run

Saturday, April 30

00.00 – 24.00	Power available from 360 CES Generators (pre-booking essential)
Before 07.00	Total ban on the use of paddock vehicles etc.
Before 08.45	No racing engines to be run
13.05 – 14.05	Lunch Break
After 18.30	No racing engines to be run
After 19.00	Total ban on the use of paddock vehicles etc.

Sunday, May 1

00.00 – 18.00	Power available from 360 CES Generators (pre-booking essential)
Before 09.00	No racing engines to be run
Before 09.00	Total ban on the use of paddock vehicles etc.
09.45 – 10.20	Pits Walkabout / Autograph Session
09.20 – 10.40	No Racing Engines (CHURCH BREAK)
14.45 – 15.05	Marshals' Break
After 18.30	No racing engines to be run
After 19.00	Total ban on the use of paddock vehicles etc.

Pit Bays

WARNING: Because the flat patch at Thruxton is in front of some of the pit garages, the area in the pit lane in front of Garages 23, 24, 25 and 26 must be kept clear during all sessions.

Important Notes for All Competitors:

- All Paddock vehicles should enter the circuit via the main entrance, keeping on the left hand side if told to wait, and through the vehicle tunnel. Please note: If there is a back-up of traffic via the main entrance, race transporters / support vehicles / motorhomes will be diverted by security through the Industrial Estate entrance on to the circuit.
- Once through the tunnel, all Paddock vehicles should be driven slowly down the infield access roadway towards the petrol pumps and turn left into the support race paddock area. Those teams in the main paddock behind the pit garages should turn left at the petrol pumps, drive through the support race paddock area and enter the main paddock through the gate near the Media Centre. Do NOT enter the paddock via the gate on your left as you exit the tunnel as this will block the tunnel.
- There is strictly no access to the main Pit Lane for BTCC vehicles during the test sessions on Friday, April 29.
- Please note it is not permitted to drive any pins or stakes into the Paddock surface. A fine of £100 plus reinstatement costs may be levied by the circuit for each and every breach of this rule.
- The Competitors Car Park is the car park to the right of the main entrance (Car Park B). This is where all vehicles with Competitors Car Park passes, crew buses, vans etc. should be parked, **and that includes during the Parking Up days (Thursday, April**

28 and Friday, April 29). No cars unless vital to the running of the meeting will be permitted access to the paddock.

- The Motorhome area (for those motorhomes not shown on the paddock plan) is the grass area on the right hand side of the road before the fuel pumps (as vehicles approach from the tunnel). The overflow motorhome area is near the circuit office.
- The Fire Lane at the rear of the Pit Garages must be kept totally clear at all times.
- Empty Carless fuel cans should be left neat and tidy cans at the circuit fuel pumps. **Please ensure that all waste oil is placed in the containers provided by the circuit and not put into empty Carless fuel cans (along with any other substances) as these incur high costs to recycle and the costs will be passed on to all teams in your Championship.**
- The maximum number of starters permitted by the MSA Track Licence at Thruxton is 38.
- The police will be operating a one-way traffic system from 08.30hrs on Sunday, May 1. Please follow the directional signage and give this system your fullest co-operation. See 1.2 above.
- **Due to local air traffic control restrictions you may only fly flags on your transporters between 09.00hrs on Saturday, April 30 to 18.00hrs on Sunday, May 1. The erection of flags and flagpoles outside these times is strictly prohibited.**
- On safety grounds there will be no access for motorised vehicles (including quad bikes and scooters) to the grass triangle area behind the Scrutineering Bay.
- There is no circuit power available in the paddock or on the pit wall.
- BTCC Drivers' name boards must be placed on the pillars of the pit garages and not on the advertising hoardings above the garage doors.
- A Pass Out system will be operational on Sunday, May 1. Anyone with a BTCC/TOCA pass of any description who needs to leave the circuit must make sure they see a security guard at the main gate to be issued with the Pass Out. Anyone attempting to re-enter the circuit with a marked pass but without a Pass Out will be refused admission. Please ensure all team members and guests with permanent passes understand this.

4 Full Revised Timetable (on separate page below):

THRUXTON CIRCUIT
Saturday / Sunday April 30 – May 1
2011 TOCA Timetable : Version 5 (06.04.11)

Saturday, April 30

Time	Activity	Championship	Signing-On	Scrutineering
09.00 – 09.20	Qualifying	Formula Renault 2.0 UK Championship	07.45 – 08.00	07.30 – 08.30
09.30 – 09.45	Free Practice	Ginetta Junior Championship	08.15 – 08.30	07.30 – 08.30
09.55 – 10.35	Free Practice	Dunlop MSA British Touring Car Championship	08.30 – 09.00	08.00 – 09.00
10.50 – 11.10	Qualifying	Michelin Ginetta GT Supercup	08.45 – 09.15	08.30 – 09.30
11.20 – 11.50	Qualifying	AirAsia Renault Clio Cup UK	08.15 – 08.30	09.00 – 10.00
12.00 – 12.15	Qualifying	Ginetta Junior Championship	09.45 – 10.00	08.30 – 10.30
12.25 – 13.05	Free Practice	Dunlop MSA British Touring Car Championship	---	---
13.05 – 14.05	<i>Lunch Break</i>			
14.05 – 14.25	Qualifying	Formula Renault 2.0 UK Championship	---	---
14.35 – 15.05	Qualifying	Porsche Carrera Cup Great Britain	10.30 – 11.00	10.00 – 11.00
15.15 – 15.45	Qualifying	Dunlop MSA British Touring Car Championship	---	---
15.55	Race	Michelin Ginetta GT Supercup		11
16.25	Race	AirAsia Renault Clio Cup UK		12
17.05	Race	Ginetta Junior Championship		11
17.40	Race	Formula Renault 2.0 UK Championship		16

Sunday, May 1

Time	Activity	Laps
09.45 – 10.20	<i>Pit Lane Walkabout / Autograph Session</i>	
10.45	Michelin Ginetta GT Supercup	16
11.20	<i>BTCC Pit Lane Opens</i>	
11.30	Dunlop MSA British Touring Car Championship	16
12.10	Porsche Carrera Cup Great Britain	21
12.50	AirAsia Renault Clio Cup UK	12
13.30	Ginetta Junior Championship	9
14.00	<i>BTCC Pit Lane Opens</i>	
14.10	Dunlop MSA British Touring Car Championship	16
14.45 – 15.05	<i>Marshals' / Lunch Break / BTCC Drivers' Parade</i>	
15.05	Formula Renault 2.0 UK Championship	16
15.45	Michelin Ginetta GT Supercup	16
16.25	Porsche Carrera Cup Great Britain	21
17.05	<i>BTCC Pit Lane Opens</i>	
17.15	Dunlop MSA British Touring Car Championship	16

THE PROGRAMME MAY BE BROUGHT FORWARD OR THE PROGRAMME ORDER MAY BE AMENDED AND COMPETITORS SHOULD LISTEN CAREFULLY TO THE INSTRUCTIONS GIVEN TO THEM BY THEIR CHAMPIONSHIP CO-ORDINATOR AND/OR PADDOCK ANNOUNCEMENTS. IT MAY NOT BE POSSIBLE TO ACCOMMODATE COMPETITORS ARRIVING AFTER THE ASSEMBLY AREA HAS BEEN CLEARED.

Bulletin 7 – Donington Park

**Results**

Please see the following link for the latest championship results:

http://ginetta.com/championship_supercup

The final results from all race weekends, including further data for analysis can be found on the TSL website: www.tsl-timing.com

The current Ginetta GT SuperCup G55 Cup drivers championship table is as follows:

	Driver	Total
1	Tom Sharp	216
2	George Murrells	138
3	Carl Breeze	130
4	Adam Morgan	116
5	Colin White	98
6	Nathan Freke	74
7	Joachim Ritter	72
8	Freddie Hetherington	72
9	Clint Bardwell	54
10	Alistair James	52
11	Jordan Skinner	32
12	Mark Steward	27

The current Ginetta GT SuperCup G50 Cup drivers championship is as follows:

	Driver	Total
1	Tom Ingram	156
2	Jody Fannin	131
3	Rob Gaffney	126
4	Jake Hill	111
5	Louise Richardson	96
6	Aaron Williamson	84
7	Connaire Finn	68
8	Andrew Richardson	66
9	Martin Thomas	36
10	Paul McClughan	14

Teams Championship

The current Michelin Ginetta GT SuperCup team's championship table is as follows:

	Team	Total
1	Optimum Motorsport	249
2	IDL	216
3	Plans Motorsport	208
4	TCR	202

Judicial Information

Qualifying

Car 8	Fastest lap time disallowed (Q12.6.1) for failing to slow down for yellow flags
Car 73	Fastest lap time disallowed (Q12.6.1) for failing to slow down for yellow flags
Car 75	Fastest lap time disallowed (Q12.6.1) for failing to slow down for yellow flags
Car 78	Fastest lap time disallowed (Q12.6.1) for failing to slow down for yellow flags

Race 2

Car 31	Formal written reprimand (2 points)	Breach of C1.1.5
--------	-------------------------------------	------------------

Race 3

Car 27	Exclusion (eligibility)	Contravening championship regulation
6.12.4		
Car 73	0.5 seconds added to race time	C2.3 (Gaining an unfair advantage)

Scrutineering

Scrutineering and technical information will follow shortly.

Issued by-

Max Gregory (19 April 2011)

Championship Co-ordinator

For and on behalf of Ginetta Cars

Max Gregory

T-0113 3854162

M-07792 927552

F-0113 3854141

[E- max.gregory@ginetta.com](mailto:max.gregory@ginetta.com)

Bulletin 6



Ginetta GT Supercup Drivers / Teams,

After the first round of the Championship at Brands Hatch, it was brought to our attention that people watching the races on TV / in the crowd were struggling to distinguish between the G55 and G50 cars. In order to combat this, we have produced some identity stickers that will be applied to both the windscreen header and the number boards on **G50 cars only.**

It is compulsory that these stickers are used at all times during the BTCC meetings. Each car will be issued with one set of stickers. As with the other championship decals, the first set of stickers are free of charge and any further stickers will have to be paid for.

Issued by-

Max Gregory (13th April 2011)

Championship Co-ordinator

For and on behalf of Ginetta Cars

Max Gregory

T-0113 3854162

M-07792 927552

F-0113 3854141

[E- max.gregory@ginetta.com](mailto:max.gregory@ginetta.com)

Bulletin 5 – 07/04/2011



Ginetta GT Supercup Drivers / Teams,

Please see the following details relating to the second round of the Championship at Donington Park.

Ginetta Staff

The following core Ginetta staff will be present at Donington Park:

Championship Co-ordinators	- Stewart Linn (Mobile 07950 778358)
	- Max Gregory (Mobile 07792 927552)
Stores	- Dave Reid
GT Supercup Technical Support	- Marcos Lameirao
Ginetta Junior Technical Support	- Ashley Gallagher

Ginetta Spares Truck

The Ginetta Spares truck will be present at Donington Park from Thursday (14th April) from 9.00am.

Testing

Ginetta GT Supercup testing will take place on Thursday 14th April rather than Friday due to noise restrictions, however, Ginetta Junior testing will take place as normal on Friday. Please note that this will be the only event where the testing will take place on Thursday.

Thursday Testing Sign On

Signing on for the Thursday testing will take place in the Ginetta race centre from 8.30am – 9am.

Weekend Sign on and Drivers briefing

Ginetta GT Supercup signing on for the race weekend will take place in the Ginetta race centre at 9.00am.

Drivers briefing will take place at 9.30am in the Ginetta race centre.

Circuit Entry:

During Parking Up days (Weds-Fri, April 13-15) all vehicles should enter the circuit via the main entrance, and then follow the perimeter road round to the paddock security gate.

The paddock entrance (the entrance from the road to Melbourne) will be opened for the Saturday and Sunday only.

Competitors Car Park:

The Competitors Car Park at all times is the area outside the paddock entrance (next to and opposite the Paddock Wall) as directed by security personnel (and **NOT** inside the paddock).

AT ANY TIME: Vehicles with Competitors Car Park vehicle passes or without passes will not be permitted inside Paddock 2 (Support Race paddock) or Paddock 1 (BTCC paddock).

Live Television:

PLEASE NOTE: Due to the demands of the live ITV broadcast at this Championship Meeting, the event timetable on Sunday is flexible to allow for any unforeseen circumstances on the day. Therefore start times, particularly for the BTCC races, may change at short notice and teams/competitors will be notified by event officials if/when that happens.

Support Race Pit Lane Entry / Exit and Test Day Re-fuelling:

Entry for pit lane equipment for both the test day and the race weekend will be via the gate next to the Race Control building – **accessed along the road at the back of the BTCC paddock** (not through the BTCC paddock). Exit for pit lane equipment on both the test day and the race weekend will be through the gate next to Garage 38. Re-fuelling (if necessary) during the Support Race test days on Thursday and Friday may only take place in the Parc Ferme area.

Timetable

Thursday, April 14

07.00 – 08.30	Porsche / Renault / Ginetta GT latecomers Parking Up
09.30 – 10.15	F Renault Testing
10.20 – 11.05	Ginetta GT Testing
11.10 – 11.55	Renault Clio Testing
12.00 – 12.45	Porsche Testing
12.45 – 13.45	Lunch Break
13.00	BTCC: TOCA Bus / Dunlop Parking Up
13.45 – 14.30	F Renault Testing
14.00 – 16.00	Ginetta Junior Parking Up
14.35 – 15.20	Ginetta GT Testing
15.25 – 16.10	Renault Clio Testing
16.15 – 17.00	Porsche Testing
After 17.00	No Racing Engines to be run
18.00 – 19.00	BTCC: Large Team Motorhomes / Café Dunlop Parking Up

Friday, April 15

08.00 – 09.00	Support Race Latecomers Parking Up
Before 09.00	No Racing Engines to be run
09.00 – 12.00	Ginetta Junior Testing
After 18.00	No Racing Engines to be run

Saturday, April 16

00.00 – 24.00	Power available from 360 CES Generators (pre-booking essential)
Before 08.00	Total ban on the use of all Paddock Vehicles etc.
Before 09.00	No racing engines to be run
12.50 – 13.50	Lunch Break
15.25 – 15.55	BTCC: Qualifying
After 20.00	Total ban on the use of all Paddock Vehicles etc.
After 20.00	No racing engines to be run

Sunday, April 17

00.00 – 18.00	Power available from 360 CES Generators (pre-booking essential)
Before 08.00	Total ban on the use of all Paddock Vehicles etc.
Before 09.05	No racing engines to be run
12.45 – 13.35	Lunch Break
12.55 – 13.25	BTCC: Pit Lane Walkabout / Autograph Session
14.25	BTCC: Round 5 (16 laps)
After 20.00	No racing engines to be run
After 20.00	Total ban on the use of all Paddock Vehicles etc.

Important Notes for All Competitors:

- 1 The mandatory parking-up times on Friday are shown in the timetable above.
- 2 Any motorhomes not shown in the Paddock Plan will be parked in the Motorhome area in Paddock 3 (on the left hand side at the top of the slope once through the paddock gate).
- 3 Pit Garage keys will be delivered to teams by the Championship Co-ordinator. A deposit of £50 will be required for each key (cash, cheque or credit card no.). The keys will be collected and deposits returned by the Championship Co-ordinator on Sunday.
- 4 The Fire Lane at the rear of the Pit Garages must be kept totally clear at all times. PLEASE NOTE: Behind the Pit Garages and running under the Fire Lane are cable grooves specifically for cables to run to race transporters. Please use these grooves and do not lay any cables over the Fire Lane.
- 5 Drivers' names boards must only be attached above the garage doors by tape or Velcro pads. No screws/rivets or any other system that involves putting holes in the garages will be permitted. Please remove the tape/Velcro pads on departure. Fines plus reinstatement costs may be levied by the circuit for each and every breach of this rule.
- 6 Please note that it is not permitted to drive any pins or stakes into the Paddock surface. A fine of £100 plus reinstatement costs may be levied by the circuit for each and every breach of this rule. A limited supply of concrete blocks will be available from the circuit for holding down awnings if required.
- 7 Parking for all cars, vans, crew buses, etc. is in the Competitors Car Park – see 1.2 above.
- 8 Empty Carless fuel cans should be left tidily behind the Pit Garages when you leave. Please ensure that all waste oil is placed in the containers provided by the circuit and not put into empty Carless fuel cans (along with any other substances) as these incur high costs to recycle and the costs will be passed on to *all* teams. Support Race competitors using Carless fuel must leave their empty cans in the specific fuel can storage area in Paddock 3. Same rules apply to the Support Races re. empty cans.
- 9 All competitors / teams within the TOCA package must return used/unwanted tyres back to their tyre supplier (if that is the agreement with the tyre supplier) or take them away with them on departure. DO NOT leave them in the Paddock. Teams that do leave tyres in the Paddock may be fined as well as charged by the circuit for disposal.
- 10 The maximum number of starters permitted by the Track Licence at Donington Park National Circuit is 36, or 32 for single-seaters up to 2000cc.

- 11 A Pass Out system will be operational on Sunday, April 17. Anyone with a BTCC/TOCA pass of any description who needs to leave the circuit must see a security guard at the gate to be issued with the Pass Out. Anyone attempting to re-enter the circuit with a scratched-off pass but without a Pass Out (and vice versa) will be refused admission. Please ensure all team members and guests with permanent passes understand this.

DONINGTON PARK NATIONAL CIRCUIT
Saturday / Sunday April 16 - 17
2011 TOCA Timetable : Version 5b (05.04.11)

Saturday, April 16

Time	Activity	Championship	Signing-On	Scrutineering
09.10 – 09.25	Free Practice	Ginetta Junior Championship	07:45 – 08:00	07.30 – 08.30
09.35 – 10.15	Free Practice	Dunlop MSA British Touring Car Championship	08.30 – 09.00	08.00 – 09.00
10.30 – 10.50	Qualifying	Formula Renault 2.0 UK Championship	08.00 – 08.15	07.30 – 08.30
11.00 – 11.20	Qualifying	Michelin Ginetta GT Supercup	09.00 – 09.15	08.45 – 09.30
11.30 – 12.00	Qualifying	AirAsia Renault Clio Cup UK	09.30 – 09.45	08.15 – 10.15
12.10 – 12.50	Free Practice	Dunlop MSA British Touring Car Championship	---	---
12.50 – 13.50	Lunch Break			
13.50 – 14.05	Qualifying	Ginetta Junior Championship	---	---
14.15 – 14.45	Qualifying	Porsche Carrera Cup Great Britain	12.30 – 13.00	11.30 – 12.15
14.55 – 15.15	Qualifying	Formula Renault 2.0 UK Championship	---	---
15.25 – 15.55	Qualifying	Dunlop MSA British Touring Car Championship	---	---
16.10	Race	Michelin Ginetta GT Supercup		12
16.45	Race	AirAsia Renault Clio Cup UK		14
17.25	Race	Ginetta Junior Championship		11

Sunday, April 17

Time	Activity	Laps
09.20	Porsche Carrera Cup Great Britain	23
10.05	Formula Renault 2.0 UK Championship	16
10.45	Michelin Ginetta GT Supercup	16
11.25	BTCC Pit Lane Opens	
11.35	Dunlop MSA British Touring Car Championship	16
12.15	Ginetta Junior Championship	9
12.45 – 13.35	Lunch break	
12.55 – 13.25	Pit Lane Walkabout / Autograph Session	
13.35	AirAsia Renault Clio Cup UK	14
14.15	BTCC Pit Lane Opens	
14.25	Dunlop MSA British Touring Car Championship	16
15.05	Porsche Carrera Cup Great Britain	23
15.45	Formula Renault 2.0 UK Championship	16
16.25	Michelin Ginetta GT Supercup	16
17.05	BTCC Pit Lane Opens	
17.15	Dunlop MSA British Touring Car Championship	16

The programme may be brought forward or the programme order may be amended and competitors should listen carefully to the instructions given to them by their Championship Co-ordinator and/or Paddock

announcements. It may not be possible to accommodate competitors arriving after the Assembly Area has been cleared.

Bulletin 4 – 04/04/2011**Results**

Please see the following link for the latest championship results:

http://ginetta.com/championship_supercup

The final results from all race weekends, including further data for analysis can be found on the TSL website: www.tsl-timing.com

The current Ginetta GT SuperCup G55 Cup drivers championship table is as follows:

	Driver	Total
1	Tom Sharp	108
2	Carl Breeze	73
3	George Murrells	70
4	Adam Morgan	60
5	Clint Bardwell	54
6	Nathan Freke	52
7	Colin White	42
8	Alistair James	38
9	Joachim Ritter	38
10	Mark Steward	27
11	Jordan Skinner	0

The current Ginetta GT SuperCup G50 Cup drivers championship is as follows:

	Driver	Total
1	Tom Ingram	87
2	Jody Fannin	76
3	Andrew Richardson	66
4	Rob Gaffney	56
5	Aaron Williamson	48
6	Martin Thomas	36
7	Connaire Finn	32
8	Louise Richardson	22
9	Jake Hill	20
10	Paul McClughan	14

Teams Championship

The current Michelin Ginetta GT SuperCup team's championship table is as follows:

	Team	Total
1	Plans Motorsport	125
2	TCR	111
3	IDL	108
4	Century Motorsport	106

Judicial Information

Qualifying

Cars 27 & 80 Black/white flag shown for exceeding track limits.
Car 27 Black flag shown for exceeding track limits

Race 1

Car 22 Drive-through penalty (false start)
Car 94 Written reprimand (2 penalty points) Breach of C1.1.5

Race 2

Car 11 Written reprimand (2 penalty points) Breach of C1.1.5

Race 3

Car 8 Written reprimand (2 penalty points) Breach of C1.1.5

Race 3 results remain provisional pending further review of video footage.

Scrutineering

Pre-Event	
Racewear, Helmets and Hans Devices	All Cars

Qualifying	
Cars weighed with, and without driver	All Cars

Round 1	
Fuel Sample <ul style="list-style-type: none"> Some slight contamination was evident in two samples - please ensure that "pump" fuel used in free practice is well flushed from systems including filters and external fuel pumps before Carless race fuel is used. 	Cars 3, 5, 33 and 46
Rolling Road	Cars 10 and 27
Front camber shims, front wishbones and air filters checked	Cars 2, 10, 27, 71, 75 and 80

Round 2	
Fuel Sample	Cars 5, 10, 46, 71 and 80
Reverse Gear checked	Cars 10, 27, 31, 69 and 71

Round 3	
Throttle body dimensions	Cars 3, 10, 27, 31, 46, 71, 73 and 80

Issued by-
Max Gregory (5 April 2011)
Championship Co-ordinator
For and on behalf of Ginetta Cars

Max Gregory
T-0113 3854162
M-07792 927552
F-0113 3854141
E- max.gregory@ginetta.com

The following Championship regulation changes and amendments shall be made for the 2011 Ginetta GT Supercup with immediate affect:

Championship regulation 7.12.4 to be altered to read:

7.12.4 The front and rear wheel camber angle may be adjusted by means of standard size shims. The only permitted shims are those supplied by Ginetta Cars LTD.

As standard, the shims are supplied in the following thicknesses

- 2.00mm
- 3.00mm
- 5.00mm

The front and rear wheel camber may be adjusted to a minimum by use of a single 2.00 mm thick shim per upright and to a maximum of 15.00 mm per upright using a combination of the standard shims.

Championship regulation 7.14.2 to be altered to read:

7.14.2 The maximum number of tyres available to each car for use during each Championship meeting (where two or three rounds are timetabled over a single weekend) will be limited to 4 new tyres and 2 used tyres. The 'used' spare tyres must be those used (and thus will have been nominated) on a previous race weekend.

A maximum of 6 tyres must be presented at scrutineering (4 on the car, 2 additional tyres) for registration and recording by the Eligibility Scrutineer. The two additional tyres must consist of 1 front tyre and 1 rear tyre. Two of the six tyres must be those used at a previous meeting in the 2011 championship and as such will be recorded within the car's log book from a previous meeting. The only exception to this is the first event at Brands Hatch. At the Brands Hatch meeting only (April 2/3), the maximum number of tyres available to each car is 6 tyres (new or used).

Bar-coding and / or permanent paint marking will be used to control tyre use. It is the competitor's responsibility to ensure that all tyres are marked before use and logged by the series co-ordinator and/or series scrutineer.

Championship regulation 7.14.10 to be added as follows:

7.14.10 Only the championship coordinator / organisers have the authority to alter the tyre allocation. If, through force majeure, the total tyre allocation needs to be altered at any point throughout the season, drivers will be notified by way of official bulletin.

The following Championship regulation changes and amendments shall be made for the 2011 Ginetta GT Supercup with immediate affect:

Championship regulation 6.12.6 to be altered to read:

6.12.6 Springs. The only permitted springs are the ones as outlined below and supplied within the range as detailed by Ginetta Cars LTD. The use of additional 'helper' springs is not permissible. Springs are required to have legible manufacturers identification marks to be considered to be compliant with the technical regulations.

If the distinguishing marks become illegible the component may be re-authenticated providing an audit trail and compliance with the component specification can be demonstrated.

Front and Rear Spring range (outlined only) and part numbers;

- 550 lbs (Ginetta part number G50D0016)
- 650 lbs (Ginetta part number G50D0015)
- 700 lbs (Ginetta part number G50C0079)
- 750 lbs (Ginetta part number G50D0017)
- 800 lbs (Ginetta part number G50C0009)
- 900 lbs (Ginetta part number G50C0080)

Championship regulation 7.12.6 to be altered to read:

7.12.6 Springs. The only permitted springs are the ones as outlined below and supplied within the range as detailed by Ginetta Cars LTD. The use of additional 'helper' springs is not permissible. Springs are required to have legible manufacturers identification marks to be considered to be compliant with the technical regulations.

If the distinguishing marks become illegible the component may be re-authenticated providing an audit trail and compliance with the component specification can be demonstrated.

Front and Rear Spring range (outlined only) and part numbers;

- 550 lbs (Ginetta part number G50D0016)
- 650 lbs (Ginetta part number G50D0015)
- 700 lbs (Ginetta part number G50C0079)
- 750 lbs (Ginetta part number G50D0017)
- 800 lbs (Ginetta part number G50C0009)
- 900 lbs (Ginetta part number G50C0080)

Championship regulation 7.5.1 to be altered to read:

- 7.5.1 The Ginetta G55 race car must only use a rear wing aero kit as supplied by Ginetta Cars. All components of the rear wing kit must remain as standard and as supplied by Ginetta cars and may not be altered in any way. A rear wing gurney (part no. G55-B0124) may be fitted as an option. No additional structures, other than those permitted by Ginetta Cars are allowed.

Championship regulation 7.12.3 to be altered to read:

- 7.12.3 The minimum ride height of the chassis shall be in excess of 60mm at all times, as measured in a vertical plane from the lowest point of the chassis floor pan to the ground surface below. The minimum ride height of any part of the car, other than the chassis (i.e. ground clearance), shall be in excess of 45mm, as measured in a vertical plane.

At each championship round, the championship scrutineer will designate a location where all ride height measurements shall take place.

These measurements shall be applied with the driver on board, and with tyres normally inflated. If the ride height is measured at the end of an on-track session, the tyre pressures may not be altered prior to the ride height being checked.

MSO Contact Details

For any teams not arriving during the allocated parking up times, please contact Derek Wellar on 07850 905573.

Judicial Cameras

For any drivers who did not receive their judicial cameras at the media day, these will be handed over / installed on Friday 1 April. Please note that all teams will be invoiced £200+vat as per the championship regs. This money will be returned at the end of the season after the cameras are safely returned to Ginetta.

All TOCA Permanent Passes:

A reminder for the start of the season - TOCA permanent passes will be checked by circuit security on Sunday, April 3. Please make sure you have the passes readily available to make this process run as smoothly and efficiently as possible (i.e. around your **NECK** as stated in the Regulations, or even in your hand ready to pass over to the security person, but NOT in a bag or in the boot of your car!). Please also be patient with the security personnel at the gates if queues form, they are only doing their job!

Paddock Vehicles:

A reminder: All two-wheeled transport is banned from the paddocks (all season) – and this includes bicycles! (anyone seen riding a bicycle or two-wheeled vehicle through the paddocks will have it confiscated and their pass removed). No recreational use will be tolerated on any form of paddock vehicle, as stated in the Championship Regulations.

Anyone who fails to observe this ruling will have their permanent pass withdrawn and the vehicle confiscated until the end of the meeting. For the avoidance of doubt, paddock vehicles (i.e. quad bikes, scooters, flat-bed buggies) should only be used for carrying or towing equipment.

Golf-buggy type vehicles that are used to ferry guests / team members are permitted provided they are driven by a person who holds a current UK driver's licence, and are driven with due care and attention. At all times, pedestrians must be given the right of way.

During Friday Testing:

At all times during the testing on Friday, April 1, a roadway must be left clear at the back of the BTCC paddock (between the fence and the first yellow painted line) to permit access for Emergency Vehicles and Support Race vehicles.

Therefore no vehicles are permitted to park up against the fence at the back of the paddock until after the day's testing has finished at 17.30hrs. And, after that time, only those marked on the paddock plan will be able to park against the fence.

Support Race Pack Down:

Teams may not take down their awning until the start of the 2nd Touring Car race of the weekend

Teams may not leave the paddock until after the start of the Third Touring car Race of the weekend.

All vehicles must be clear of the paddock by the end of Monday, April 4.

Vehicle Access / Car Parking during Parking Up Days:

To help ease paddock congestion on all Parking Up days (Thursday and Friday, as detailed in the timetable below, 1.12) ALL vehicles must enter the circuit via the main gate (off the A20) and NOT the Scratchers Lane gate. Any vehicles that do not have Paddock passes will be shown into the Grey car park at that point. Security will be in place at the main entrance to help with directions!

Any abuse shown towards the vehicle pass system / security will resort in passes being withdrawn. Any vehicles found in unauthorised areas will be removed without question.

Competitors Car Park / Vehicle Pass Holder entry into circuit on Saturday / Sunday:

To help traffic flow on the access roads to Brands Hatch on Saturday / Sunday, all vehicles with TOCA vehicle passes should approach the Scratchers Lane entrance and turn either into the Competitors Car Park (Upper Triangle), which is opposite the Scratchers Lane entrance, or the circuit (paddock-labelled vehicles only). On Sunday race-traffic specific road signs will be in place on the approach to the circuit and at the Competitors Car Park entrance.

Live Television:

PLEASE NOTE: Due to the demands of the live ITV broadcast at this Championship Meeting, the event timetable on Sunday is flexible to allow for any unforeseen circumstances on the day. Therefore start times, particularly for the BTCC races, may change at short notice and teams/competitors will be notified by event officials if/when that happens.

Support Race Pit Lane Entry / Exit and Re-Fuelling during testing:

Entry for Support Race pit lane equipment for the test day is via the Parc Ferme area, though TOCA reserves the right to change that on the test day if necessary. Exit from the pit lane during the test day and Race Weekend is via the exit at the Race Control building that leads to the road to the vehicle tunnel. Any re-fuelling required during the Friday test day should be

carried out in the Parc Ferme area and teams are reminded to have fire extinguishers with them at all times during re-fuelling.

Timetable:

Thursday, March 31

09.00 – 11.00	<i>Ginetta Parking Up</i>
11.00 – 13.00	<i>Renault Parking Up</i>
13.00 – 15.00	<i>Porsche Parking Up</i>

Friday, April 1

Before 08.45	BTCC: Support Vehicles access over track to centre paddock All Support Vehicles must be removed from the Pit Lane before 08.45hrs
07.30 – 08.30	<i>Parking Up for Support Race Latecomers</i>
09.00 – 09.45	<i>Ginetta GT Supercup Testing</i>
10.40 – 11.10	<i>Ginetta Junior Testing</i>
12.50 – 13.40	Lunch Break
13.40 – 14.25	<i>Ginetta GT Supercup Testing</i>
15.20 – 15.50	<i>Ginetta Junior Testing</i>
After 18.30	No racing engines to be run
After 19.30	Total ban on the use of paddock vehicles etc.

Saturday, April 2

00.00 – 24.00	Power available from 360 CES Generators (pre-booking essential)
Before 07.00	Total ban on the use of paddock vehicles etc.
Before 08.30	No racing engines to be run
13.15 – 14.15	Lunch Break
After 18.30	No racing engines to be run
After 19.30	Total ban on the use of paddock vehicles etc.

Sunday, April 3

00.00 – 18.00	Power available from 360 CES Generators (pre-booking essential)
Before 08.00	Total ban on the use of paddock vehicles etc.
Before 09.00	No racing engines to be run
09.10 – 09.50	BTCC: Pit Lane Walkabout / Autograph Session
12.30 – 13.15	Lunch Break
After 18.30	No racing engines to be run
After 19.30	Total ban on the use of paddock vehicles etc.

Additional Important Notes for All Competitors:

1. There is strictly no access to the main Pit Lane for BTCC vehicles during the test sessions on Friday – however teams will be permitted to push their cars into the area of the pit lane immediately in front of their garages in between test sessions to enable them to put them in their pit garages, but the cars must not be left in the pit lane unattended, and BTCC teams should only do this when there is space (i.e. no support race cars being worked on at the time).
2. Please note it is not permitted to drive any pins or stakes into the Paddock surface. A fine of £100 plus reinstatement costs may be levied by the circuit for each and every breach of this rule. A limited supply of concrete blocks is available from the circuit.
3. The Fire Lane at the rear of the Pit Garages must be kept totally clear at all times.
4. The Competitors Car Park for Saturday/Sunday is in Upper Triangle car park which will be signed on the approach to Brands Hatch (approach via Scratchers Lane). All private cars, crew buses, vans etc. should be parked in Upper Triangle. No cars unless vital to the running of the meeting will be permitted access to the paddocks.
5. Empty Carless fuel cans should be left neatly at the wooden-fenced waste-oil sites in the Support Race paddock. Please ensure that all waste oil is placed in the containers provided by the circuit and not put into empty Carless fuel cans (along with any other substances) as these incur high costs to recycle and the costs will be passed on to *all* teams. Support Races should leave their empty Carless fuel cans.
6. The maximum number of starters permitted by the MSA Track Licence at Brands Hatch (Indy Circuit) is 32 (or 28 for single-seaters).
7. A Pass Out system will be operational on Sunday, April 3. Anyone with a BTCC/TOCA pass of any description who needs to leave the circuit must make sure they see a security guard at the main gate to be issued with the Pass Out. Anyone attempting to re-enter the circuit with a marked pass but without a Pass Out will be refused admission. Please ensure all team members and guests with permanent passes understand this.

4 Full Provisional Timetable:

The full provisional timetable is on a separate page below.

BRANDS HATCH INDY CIRCUIT
Saturday / Sunday April 2 - 3
2011 TOCA Timetable : Version 4 (25.02.11)

Saturday, April 2

Time	Activity	Championship	Signing-On	Scrutineering
09.00 – 09.20	Qualifying	Michelin Ginetta GT Supercup	07:45 – 08:00	07.00 – 08.30
09.30 – 09.50	Qualifying	Formula Renault 2.0 UK Championship	07.45 – 08.00	07.45 – 08.45
10.00 – 10.40	Free Practice	Dunlop MSA British Touring Car Championship	08.30 – 09.00	08.00 – 09.00
10.50 – 11.05	Free Practice	Ginetta Junior Championship	08:00 – 08:30	08.00 – 09.00
11.15 – 11.45	Qualifying	AirAsia Renault Clio Cup UK	08.15 – 08.30	08.00 – 10.00
11.55 – 12.25	Qualifying	Porsche Carrera Cup Great Britain	08.30 – 08.45	10.00 – 11.00
12.35 – 13.15	Free Practice	Dunlop MSA British Touring Car Championship	---	---
13.15 – 14.15	<i>Lunch Break</i>			
14.15	Race	Michelin Ginetta GT Supercup		16
14.45 – 15.05	Qualifying	Formula Renault 2.0 UK Championship	---	---
15.15 – 15.30	Qualifying	Ginetta Junior Championship	---	---
15.40 – 16.10	Qualifying	Dunlop MSA British Touring Car Championship	---	---
16.25	Race	AirAsia Renault Clio Cup UK		20
17.05	Race	Michelin Ginetta GT Supercup		24
17.45	Race	Porsche Carrera Cup Great Britain		34

Sunday, April 3

Time	Activity	Laps
09.10 – 09.50	<i>Pit Lane Walkabout / Autograph Session</i>	
10.25	Formula Renault 2.0 UK Championship	24
11.05	Ginetta Junior Championship	14
11.35	<i>BTCC Pit Lane Opens</i>	
11.45	Dunlop MSA British Touring Car Championship	24
12.30 – 13.15	<i>Lunch Break</i>	
13.15	Porsche Carrera Cup Great Britain	34
13.55	<i>BTCC Pit Lane Opens</i>	
14.05	Dunlop MSA British Touring Car Championship	24
14.45	AirAsia Renault Clio Cup UK	20
15.25	Michelin Ginetta GT Supercup	24
16.05	Formula Renault 2.0 UK Championship	24
16.55	<i>BTCC Pit Lane Opens</i>	
17.05	Dunlop MSA British Touring Car Championship	24
17.45	Ginetta Junior Championship	17

The programme may be brought forward or the programme order may be amended and competitors should listen carefully to the instructions given to them by their Championship Co-ordinator and/or Paddock announcements. It may not be possible to accommodate competitors arriving after the Assembly Area has been cleared.